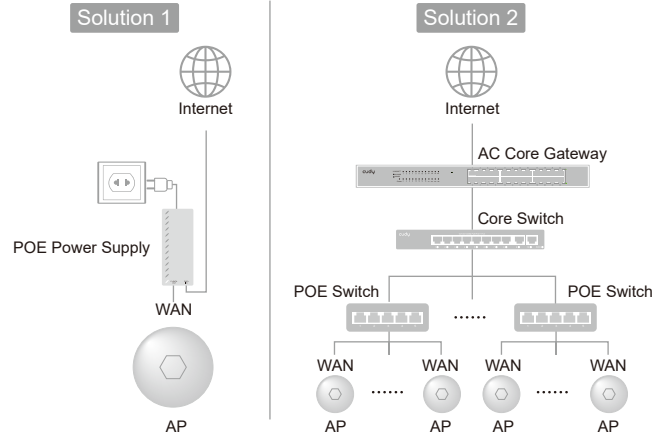


Quick Installation Guide

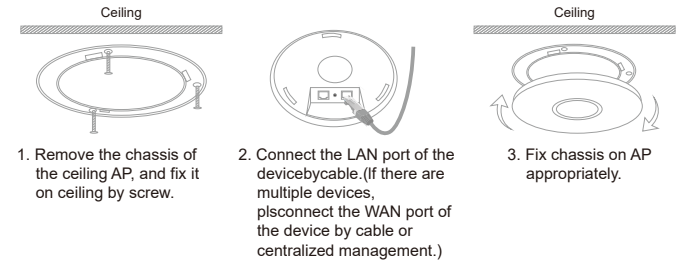
1 Installation Diagram



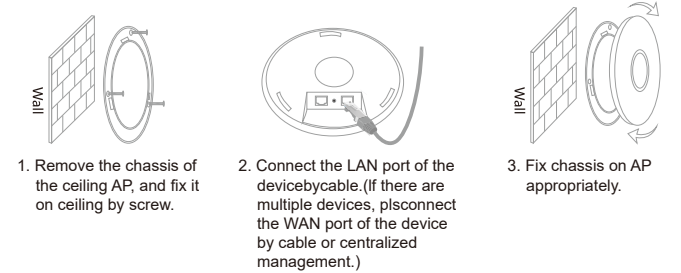
Note: Solution 1: Single Device Settings: Get into the web setting page independently.
 Solution 2: Multiple Devices Settings: Do centralized management settings and Local portal by AC core gateway.
 (Note: POE power and other devices which are non standard, pls refer to the packing list.)

2 Installation Way

2.1 Ceiling-mount Installation



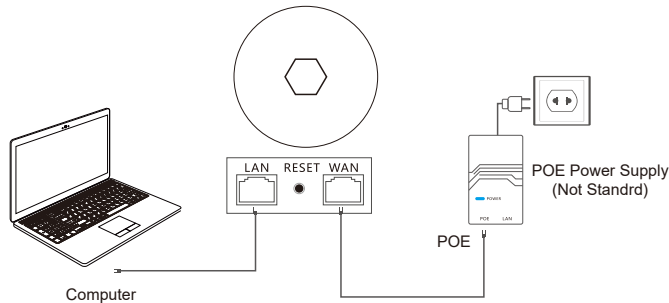
2.2 Wall-mount Installation



Note: This quick installation guide is taken the circled ceiling AP for an example. Some of square ceiling AP have 4 screws and pls push from one side to install.

3 Single Device Configuration

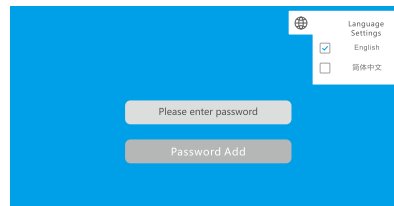
3.1 Connection Diagram



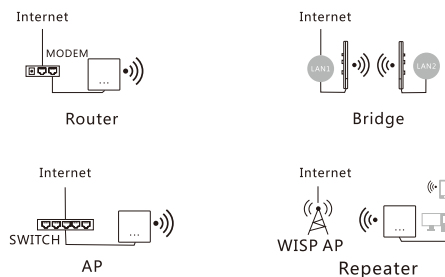
3.2 Set the computer to automatically obtain an IP address and connect to the LAN port of the device management interface.

3.3 The device is defaulted to be fat AP mode. The steps to enter the set interface as follows:

- (1) Under default configuration, power on the device and wait 90 seconds until the device to start.
- (2) Connect the device's LAN port with the computer by a network cable.
- (3) Input 192.168.10.1 in the web browser to enter the set interface.
- (4) Open the computer browser, and input 192.168.10.1 to get into the device login page. The device is defaulted as Router Mode. When you login at the first time, you need to set a password. The device language is compatible with Chinese and English to choose, and you can set up the language by the top right corner icon.

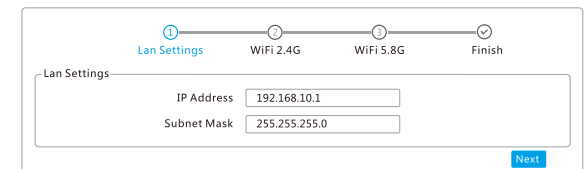


3.4 When getting into the setting page, there are four working modes in the Wizard: AP Mode, Bridge Mode, Router Mode, Repeater Mode.

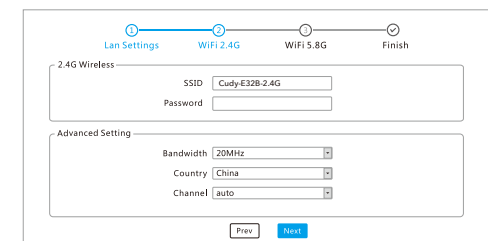


3.5 Click AP mode and set up IP Address and Subnet Mask. The IP address and Subnet mask should be within the same network segment as upper network and can't be conflict with IP address from upper network router. After settings, you can visit the device from the IP address you have set just now by connecting internet with WAN port of the device or POE adapter LAN port.

1. Notes: In AP mode, the IP address from the other devices connected the AP will be allocated by the upper network router.
2. The AP needs to set an intranet IP address (do not set the same IP address as the upper router). If you want to manage the device, manually set the IP address of the same network segment of the intranet IP.



3.6 AP Mode: You can set up 2.4G/5.8G wireless SSID, password, channel and country in advance. After setting up, the device's WAN port or POE adapter LAN port connected internet, other mobile devices can connect the SSID to surf the internet.



3.7 Bridge Mode: Pls ensure the WDS in upper network is enabled. AP device can set up intranet segment(do not set the same IP address as the upper router), and then select the wireless SSID signal you need to bridge(Distinguish between 5.8GHz and 2.4GHz) and input wireless password.

(Notes: The password is same as your upper network router)

Scan Results

NO.	BSSID	SSID	Channel	Operation
1	40:A5:EF:84:E6:34	unknown	1	🔒 📶
2	40:A5:EF:84:DE:64	unknown	1	🔒 📶
3	40:A5:EF:85:48:21	unknown	2	🔒 📶
4	00:E0:4C:81:96:D1	Cudy-E32B-2.4G	2	📶
5	40:A5:EF:84:E6:31	unknown	1	🔒 📶
6	40:A5:EF:84:DE:61	unknown	1	🔒 📶
7	40:A5:EF:80:97:36	E325N_809736	2	📶

Pls set the SSID and password for the device and click "Next" to finish settings.

3.8 Repeater Mode: The AP device can set the internal network segment (the gateway IP should not be the same as the upper device gateway IP). Next, select the name of the wireless SSID signal that you need to relay (distinguish between 5.8GHz and 2.4GHz) and input wireless password.

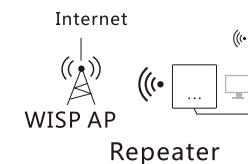
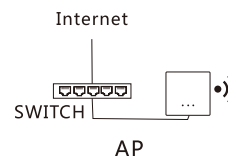
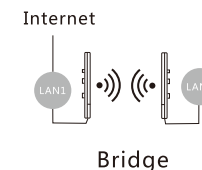
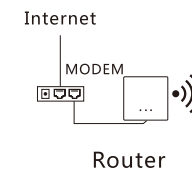
(Notes: The password is same as your upper network router).

Scan Results

NO.	BSSID	SSID	Channel	Operation
1	40:A5:EF:84:E6:34	unknown	1	🔒 📶
2	40:A5:EF:84:DE:64	unknown	1	🔒 📶
3	40:A5:EF:85:48:21	unknown	2	🔒 📶
4	00:E0:4C:81:96:D1	Cudy-E32B-2.4G	2	📶
5	40:A5:EF:84:E6:31	unknown	1	🔒 📶
6	40:A5:EF:84:DE:61	unknown	1	🔒 📶
7	40:A5:EF:80:97:36	E325N_809736	2	📶

Pls set the SSID and password for the device and click "Next" to finish settings.

3.9 Router Mode: There are three ways to surf the internet: PPPOE, Static and DHCP. (Pls refer to router setting as reference)



EU Declaration of Conformity

1. English:

Cudy hereby declares that the device is in compliance with the essential requirements and other relevant provisions of directives 2014/53/EU, 2009/125/EC and 2011/65/UE.

The original EU declaration of conformity may be found at <http://www.cudy.com/ce>.

2. Deutsch:

Cudy erklärt hiermit, dass dieses Gerät die Grundanforderungen und andere relevante Vorgaben der Richtlinien 2014/53/EU, 2009/125/EG und 2011/65/EU erfüllt.

Die Original-EU-Konformitätserklärung kann in englischer Sprache hier heruntergeladen werden: <http://www.cudy.com/ce>.

3. Español:

Por la presente Cudy declara que este dispositivo cumple con los requisitos esenciales y otras disposiciones relevantes de las directivas 2014/53/UE, 2009/125/CE y 2011/65/UE.

La declaración original CE de la conformidad puede encontrarse en: <http://www.cudy.com/ce>.

4. Italiano:

Cudy dichiara che questo dispositivo è conforme ai requisiti fondamentali e alle altre disposizioni delle direttive 2014/53/UE, 2009/125/CE e 2011/65/UE.

La dichiarazione di conformità EU originale si trova in <http://www.cudy.com/ce>.

5. Français:

Cudy par la présente déclare que cet appareil est conforme aux exigences essentielles et autres dispositions pertinentes des directives 2014/53/UE, 2009/125/CE et 2011/65/UE.

La déclaration CE de conformité originelle peut être trouvée à l'adresse <http://www.cudy.com/ce>.

6.Ελληνικό:

Δια του παρόντος η Cudy διακηρύσσει ότι αυτή η συσκευή συμμορφώνεται με τις απαιτήσεις και άλλους σχετικούς κανονισμούς των οδηγιών 2014/53/ΕΕ, 2009/125/ΕΚ και 2011/65/ΕΕ.

Μπορείτε να δείτε την αρχική δήλωση συμμόρφωσης με τους κανονισμούς της Ε.Ε. στην ιστοσελίδα <http://www.cudy.com/ce>.

7. Nederlands:

Cudy verklaart hierbij dat dit apparaat in overeenstemming is met de essentiële eisen en andere relevante bepalingen van de richtlijnen 2014/53/EU, 2009/125/EG en 2011/65/EU.

De oorspronkelijke EU verklaring van overeenstemming is te vinden op <http://www.cudy.com/ce>.

8. Português:

A Cudy declara que este dispositivo está em conformidade com os requisitos essenciais e outras disposições das Diretivas 2014/53/UE, 2009/125/CE e 2011/65/UE.

A declaração original de conformidade UE pode ser encontrada em <http://www.cudy.com/ce>.

9. Polski:

Cudy deklaruje, że niniejsze urządzenie spełnia wszelkie stosowne wymagania oraz jest zgodne z postanowieniami dyrektyw 2014/53/UE, 2009/125/WE i 2011/65/UE.

Pełna deklaracja zgodności UE znajduje się na stronie <http://www.cudy.com/ce>.

10. Türkçe:

Cudy, işbu belgeye bu cihazın temel gereksinimlerle ve ilgili 2014/53/EU, 2009/125/EC ve 2011/65/EU hükümlerinin direktifleri ile uyumlu olduğunu beyan eder.

Orijinal AB uygun beyanını <http://www.cudy.com/ce> adresinde bulabilirsiniz.

11. Norsk:

Cudy erklærer herved at denne enheten er i samsvar med de nødvendige kravene og andre relevante bestemmelser fra direktivene 2014/53/EU, 2009/125/EC og 2011/65/EU.

Den opprinnelige EU-samsvarserklæringen er tilgjengelig på <http://www.cudy.com/ce>.

12. Dansk:

Cudy erklærer hermed, at denne enhed er i overensstemmelse med de væsentlige krav og andre relevante bestemmelser i direktiverne 2014/53/EU, 2009/125/EF og 2011/65/EU.

Den oprindelige EU-overensstemmelseserklæringen kan findes på <http://www.cudy.com/ce>.