

# Check Valves



Low priming volume for lower flush volumes and drug hold up



100% inline tested for backflow and weld leaks on automated assembly equipment



No solvent residuals – ultrasonically welded providing excellent leak resistance



Wide range of available opening pressures



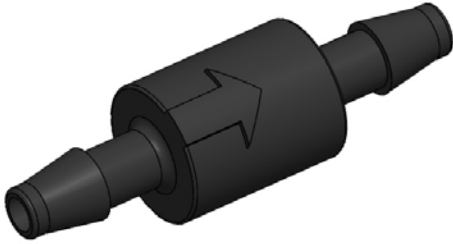
Compatible with IV pumps



Round profile well suited for automated set assembly



# CVSC Series – Lightweight Check Valve



Lightweight Check Valve with inlets consisting of 1/8", 3/16" or 1/4" hose barbs. Outlet sizes include: 1/8", 3/16" or 1/4" hose barbs and 1/8" Male NPT. Valves are available without a spring or in 304 Stainless Steel or Hastelloy. The ball material consists of 316 Stainless Steel or Teflon. Body materials include: White Nylon, Polypropylene or Kynar. 125 psi maximum operating pressure and 140° F maximum operating temperature.

## How to Build a Part

<b>Step 1</b> Select a Connection			<b>Step 2</b> Select a Cracking Pressure- (v)	<b>Step 3</b> Select Spring Material - (w)	<b>Step 4</b> Select Ball Material - (x)
Item #	Inlet	Outlet			
CVSC-18-vw-xy-z	1/8" Hose Barb	1/8" Hose Barb	Springless - No Code 1 psi - <b>1#</b>	304 Stainless Steel - <b>Standard</b> 316 Stainless Steel -	316 SS Ball - <b>Standard</b> Teflon Ball - <b>T</b>
CVSC-18-14-vw-xy-z	1/8" Hose Barb	1/8" Male NPT			
CVSC-18-2M-vw-xy-z	1/8" Hose Barb	3/16" Hose Barb			
CVSC-18-316-vw-xy-z	1/8" Hose Barb	1/4" Hose Barb	1/2 psi - <b>1/2#</b>		
CVSC-14-vw-xy-z	3/16" Hose Barb	3/16" Hose Barb	2 psi - <b>2#</b>		
CVSC-14-18-vw-xy-z	3/16" Hose Barb	1/8" Male NPT	3 psi - <b>3#</b>		
CVSC-14-2M-vw-xy-z	3/16" Hose Barb	1/8" Hose Barb		<b>Step 5</b> Select a Seal - (y)	<b>Step 6</b> Select a Body Material- (z)
CVSC-14-316-vw-xy-z	3/16" Hose Barb	1/4" Hose Barb			
CVSC-316-vw-xy-z	1/4" Hose Barb	1/4" Hose Barb		Buna-N - <b>BU</b>	Kynar - <b>K</b>
CVSC-316-14-vw-xy-z	1/4" Hose Barb	1/8" Male NPT		<b>EPDM</b>	Polypropylene - <b>PP</b>
CVSC-316-18-vw-xy-z	1/4" Hose Barb	1/8" Hose Barb		Viton - <b>V</b>	White Nylon - <b>N</b>
CVSC-316-2M-vw-xy-z	1/4" Hose Barb	3/16" Hose Barb			

### Examples of Completed Item

#### CVSC-316-T-BU-N

3/16" Hose Barb Inlet and Outlet, 0 psi Cracking Pressure - No Spring, Teflon Ball, Buna-N Seal, White Nylon Body

#### CVSC-14-1/2#-BU-N

1/4" Hose Barb Inlet and Outlet, 1/2 psi Cracking Pressure, 302 Stainless Steel Spring (Standard), 316 Stainless Steel Ball (Standard), Buna-N Seal, White Nylon Body