



- 额定电流最高达 10A
Rated currents up to 10A
- 卓越的性能/体积比
Excellent performance/size ratio
- 可选医疗型 (M 型)
Optional medical versions (M type)
- 可选卡椎插入型 (K 型)
Optional Snap-in versions
- 不同的出线连接方式
Different output connections
- 安规认证: 

特点 Features

- IEC 标准插座式一体化滤波器
IEC Connector Integrative Filter
- 通用、小巧、方便安装
General purpose, compact, easy for installation and use
- 优秀的传导衰减性能, 高性价比
Exceptional conducted attenuation performance, High performance to cost make

应用 Application

- 用于小型和中型电子设备和电子测量仪器
Available for mini to middle size electronic equipments and measuring instruments
- 电脑、通讯设备、液晶电视、电动玩具
Computer, Communication equipment, LCD TV, Electronic toys
- 医疗设备及医疗特别应用
Medical equipment and medical typical applications

技术参数 Technical Data

额定电压 Rated Voltage	125/250VAC
工作频率 Operation Frequency	50/60Hz
额定电流 Rated Current	1-10A
耐压测试 Hi-pot Test	1450VDC, 2 sec (线对线 Line to Line) 2250VDC 2 sec (线对地 Line to Ground)
气候类别 Climate Category	25/85/21 (-25°C to +85°C)
设计参考标准 Design corresponding to	UL 1283, CSA 22.2 No. 8 1986, IEC/EN 60939

电路原理图 Electrical Schematic

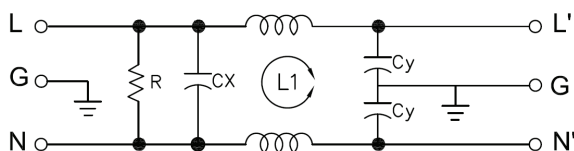


Fig 1

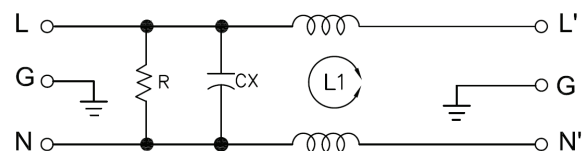
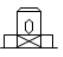



Fig 2

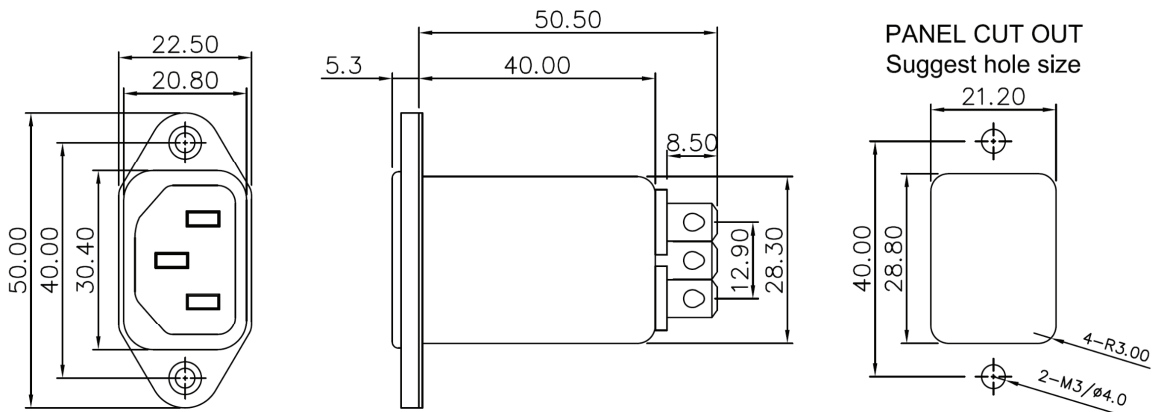
选型表 Type Selection Table

型号 Model	额定电流(A) Rated Current	泄漏电流(≤mA) Leakage Current	电路图 Circuit Diagram	外形尺寸 Dim. Fig.	出线端子方式 Output Connection	
						
DF100-1A-01	1	0.5	Fig 1	A	Standard	L
DF100-3A-01	3	0.5	Fig 1	A	Standard	L
DF100-6A-01	6	0.5	Fig 1	A	Standard	L
DF100-10A-01	10	0.5	Fig 1	A	Standard	L
DF100-1A-01M	1	0.01	Fig 2	A	Standard	L
DF100-3A-01M	3	0.01	Fig 2	A	Standard	L
DF100-6A-01M	6	0.01	Fig 2	A	Standard	L
DF100-10A-01M	10	0.01	Fig 2	A	Standard	L
DF100-1A-01K	1	0.5	Fig 1	A-K	Standard	L
DF100-3A-01K	3	0.5	Fig 1	A-K	Standard	L
DF100-6A-01K	6	0.5	Fig 1	A-K	Standard	L
DF100-10A-01K	10	0.5	Fig 1	A-K	Standard	L
DF100-1A-01KM	1	0.01	Fig 2	A-K	Standard	L
DF100-3A-01KM	3	0.01	Fig 2	A-K	Standard	L
DF100-6A-01KM	6	0.01	Fig 2	A-K	Standard	L
DF100-10A-01KM	10	0.01	Fig 2	A-K	Standard	L

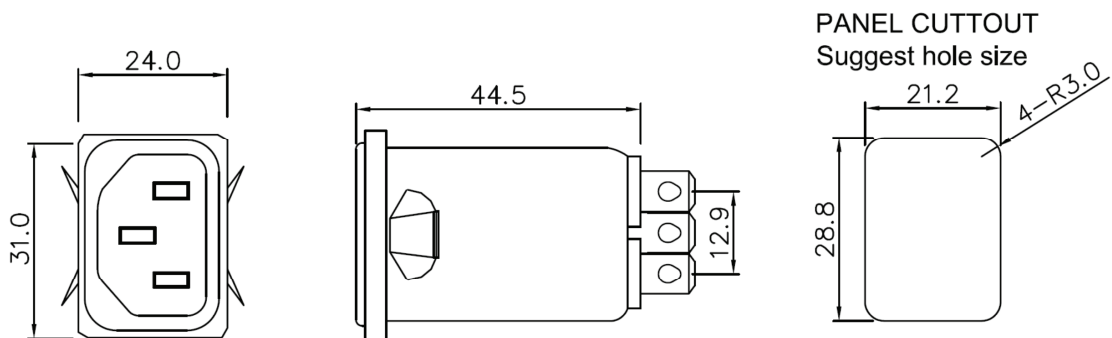
Remark: Optional Output type. Standard is Faston terminal output, L type refer to line output.

出线方式可选，标准为快速插片端子，加 L 为接线出线方式。

外形尺寸 Outline Dimensions(mm)



A



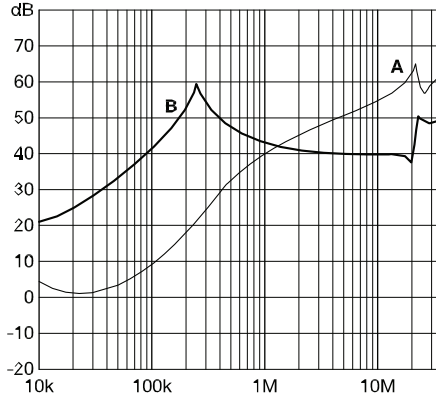
A-K

插入损耗 Insertion Loss in dB

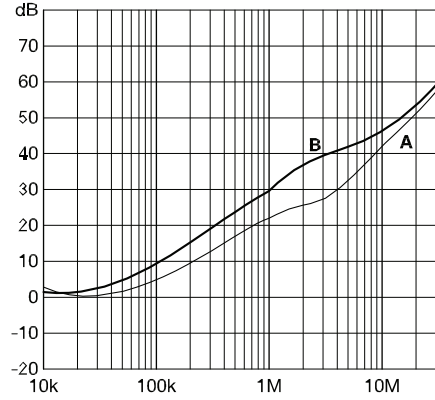
(50Ω/50Ω 环境下插入损耗 Insertion Loss in dB measured in a 50Ω/50Ω system, as IEC/CISPR No. 17)

A=Differential mode (差模) B=Common Mode(共模)

1 and 3A types



6 and 10A types



备注：以上规格为公司标准产品，可根据客户产品定制设计产品性能和尺寸外观。
如有EMC测试需求，请联系王经理13382193729

Remark: Customized products are available according to special performance or dimensions requirements
If any EMC test requirement, please contact marketing@cndephir.com

更多产品请登陆官方网站：<http://www.cndephir.com>

For more products please go to official website: <http://www.cndephir.com>